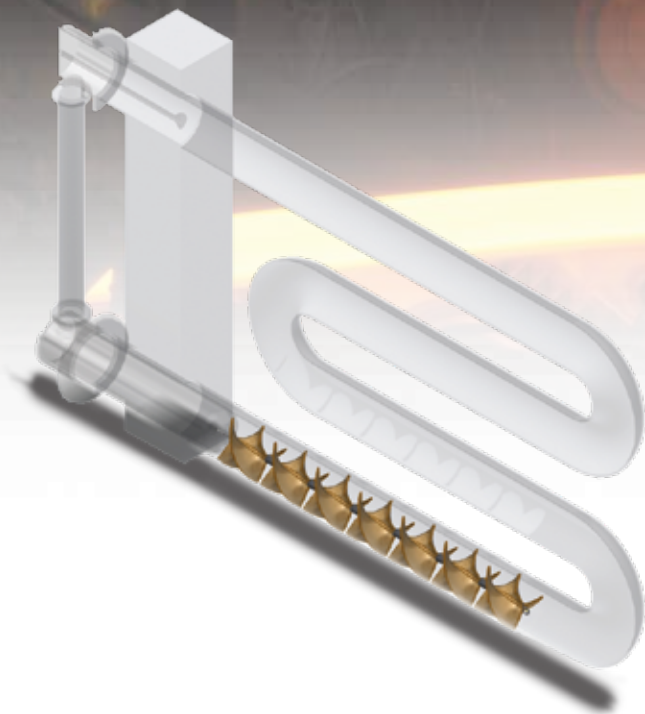


SpyroCor® Radiant Tube Inserts

MARKET: STEEL STRIP CONTINUOUS GALVANIZING & ANNEALING

CASE STUDY



Application Information

Type:	Vertical continuous annealing line
Layout:	6 heating zones, 174 tubes total throughout the furnace SpyroCor installed in zone 5&6 (44x tubes installed). Zone 3&4 utilized as a control for comparison
Radiant Tube:	W-type radiant tube in vertical orientation, with plug-type recuperator
Burner:	555,193 BTU/hr (162.7 kW)

Saint-Gobain SpyroCor Radiant Tube Inserts

Dimensions:	6.5" diameter x 6" length (165 mm diameter x 152 mm length)
Number of inserts:	7 SpyroCor per radiant tube

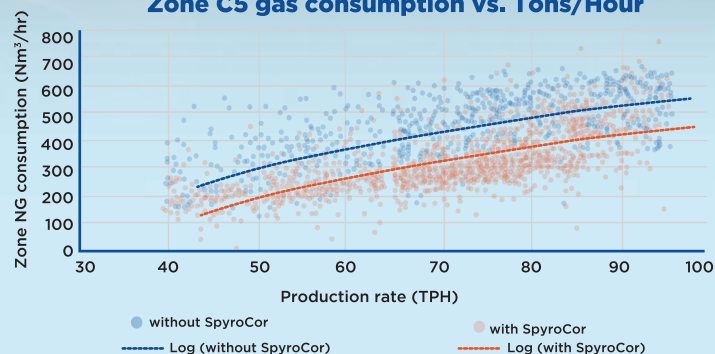
www.ceramicsrefractories.saint-gobain.com

The information contained in this document is believed to be accurate and reliable but is provided without guarantee or warranty on the part of Saint-Gobain Ceramics & Plastics, Inc. Process parameters and requirements can impact typical values and test methods. Further, nothing present herein should be interpreted as an authorization or inducement to practice any patented invention without an appropriate license. Saint-Gobain Ceramics & Plastics, Inc. Terms and Conditions apply to all purchases.

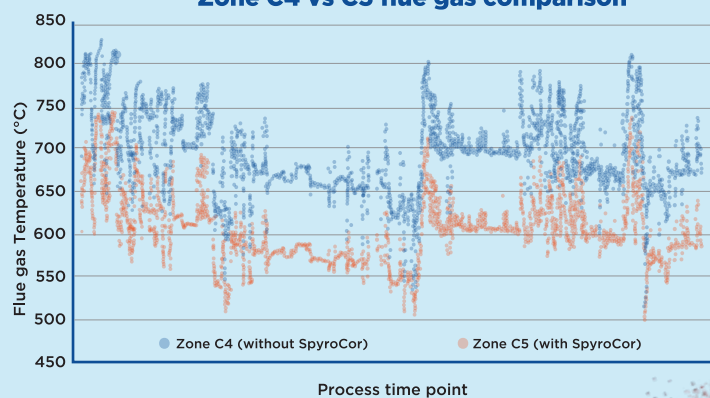
Result Summary

- **\$42K energy saved** per year over reduced energy consumption and emissions
- **5%*** improved combustion efficiency
- **144 to 162°F (80 to 90°C)** flue gas temperature reduction

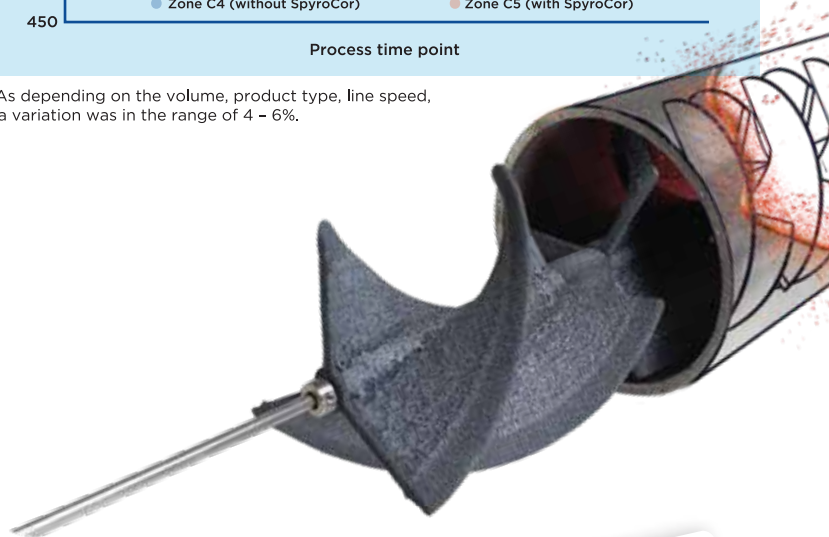
Zone C5 gas consumption vs. Tons/Hour



Zone C4 vs C5 flue gas comparison



*As depending on the volume, product type, line speed, a variation was in the range of 4 - 6%.



PERFORMANCE CERAMICS & REFRACTORIES


SAINT-GOBAIN