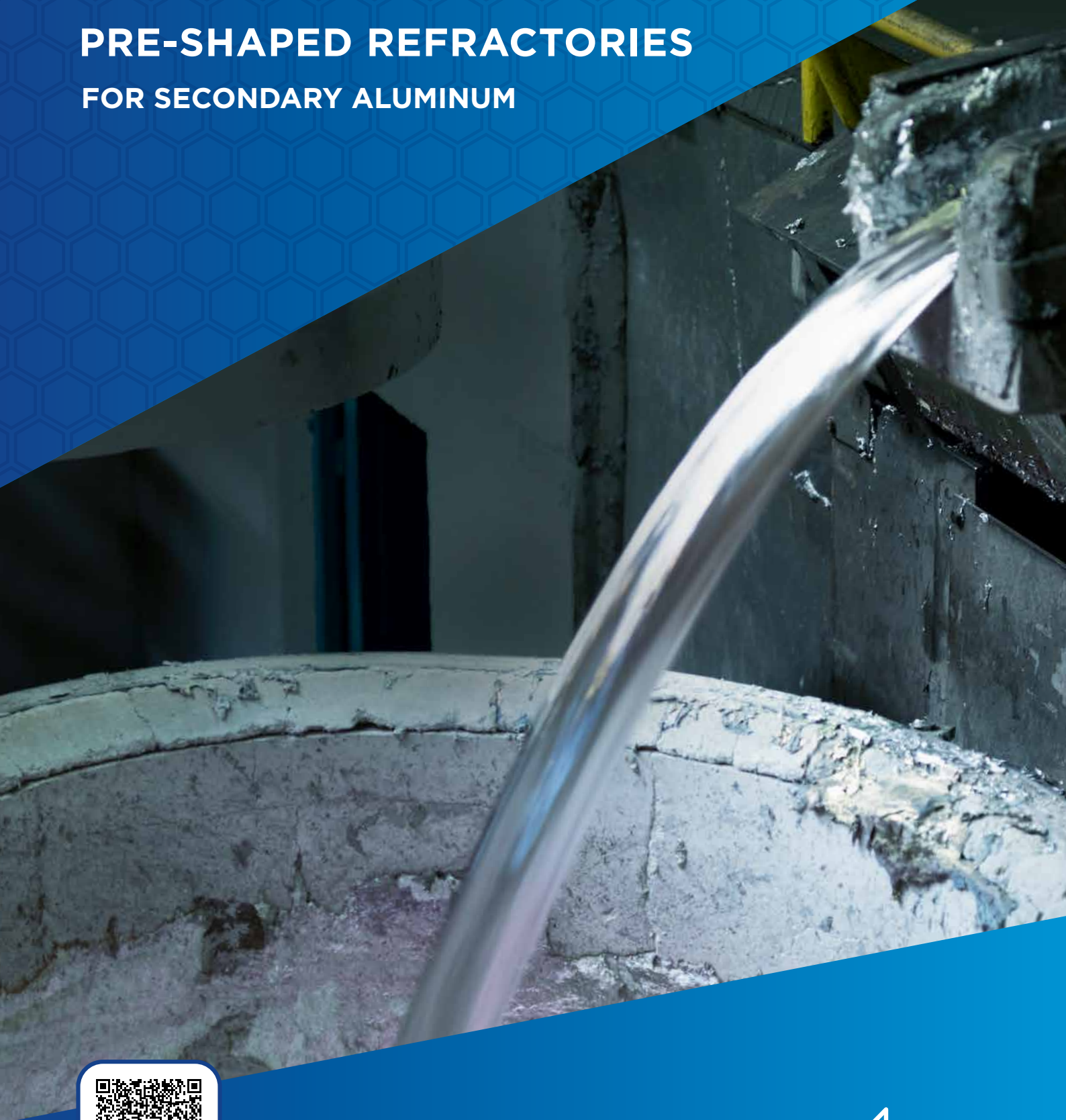


SAINT-GOBAIN PERFORMANCE CERAMICS & REFRACTORIES

MONOLITHIC & PRE-SHAPED REFRACTORIES FOR SECONDARY ALUMINUM




SAINT-GOBAIN

ALUMINUM CONTACT MATERIALS

Saint-Gobain offers a premium line of monolithic and pre-shaped refractory products for the secondary Aluminum market. The focus of our product line is to optimize performance by minimizing down time, reducing necessary refractory maintenance, and building a culture focused on reducing our impact on the environment. Through product development, an emphasis on quality, and optimizing the appropriate materials for the necessary application, we are able to maximize our customer's performance, and jointly commit to **MAKING OUR WORLD A BETTER HOME.**

BENEFITS



Increased performance



Decrease of refractory maintenance



Reduced downtime



Lower environmental impact

NORCAST™ S 760

A fused silica based castable which offers superior thermal shock resistance while also maintaining excellent non-wettability to aluminum alloys. Shown here on the left is the effect of our non-wetting package versus the same castable on the right without the package.

NorCast™ S 760 is an ideal material for areas including but not limited to troughs and runners, filter bowls, stalk tubes, and molten metal transfer equipment.



NORCAST™ K 2000 AL

A cost effective mullite based vibration castable with moderate thermal shock resistance, good wear resistance, and outstanding resistance to aluminum alloys and their subsequent slags.



NORFLOW® K 1031 AL

A self-flow, pumpable mullite castable with excellent resistance to aluminum alloys and their slags. This castable offers versatility in installation, with no vibration required, as well as superior properties for all applications involving holding and processing of molten aluminum.

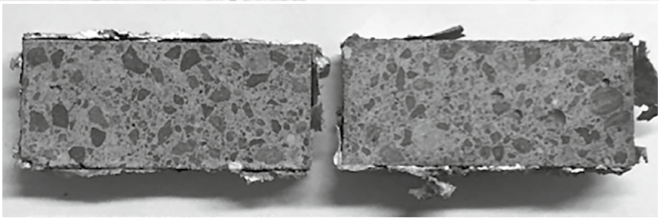
NORCAST™ C 1300

Is a silicon carbide based castable intended for high wear areas within the aluminum melting and holding process. This product maintains exceptional wear resistance and aversion to aluminum penetration at typical metal processing temperatures. Ideal areas for use include jams, spouts, impact areas, and high wear troughing sections.

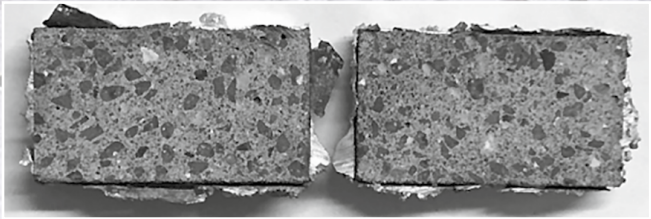


QUALIFICATION TEST REPORTS

MATERIAL	NORFLOW® K 1031 AL AT 815°C	NORCAST™ K 2000 AL AT 815°C
Adherence	Low	Low
Infiltration	None	None
Brittleness	None	None
Cracking	None	None
CLASSIFICATION	NO. 1: GOOD RESISTANCE	NO. 1: GOOD RESISTANCE

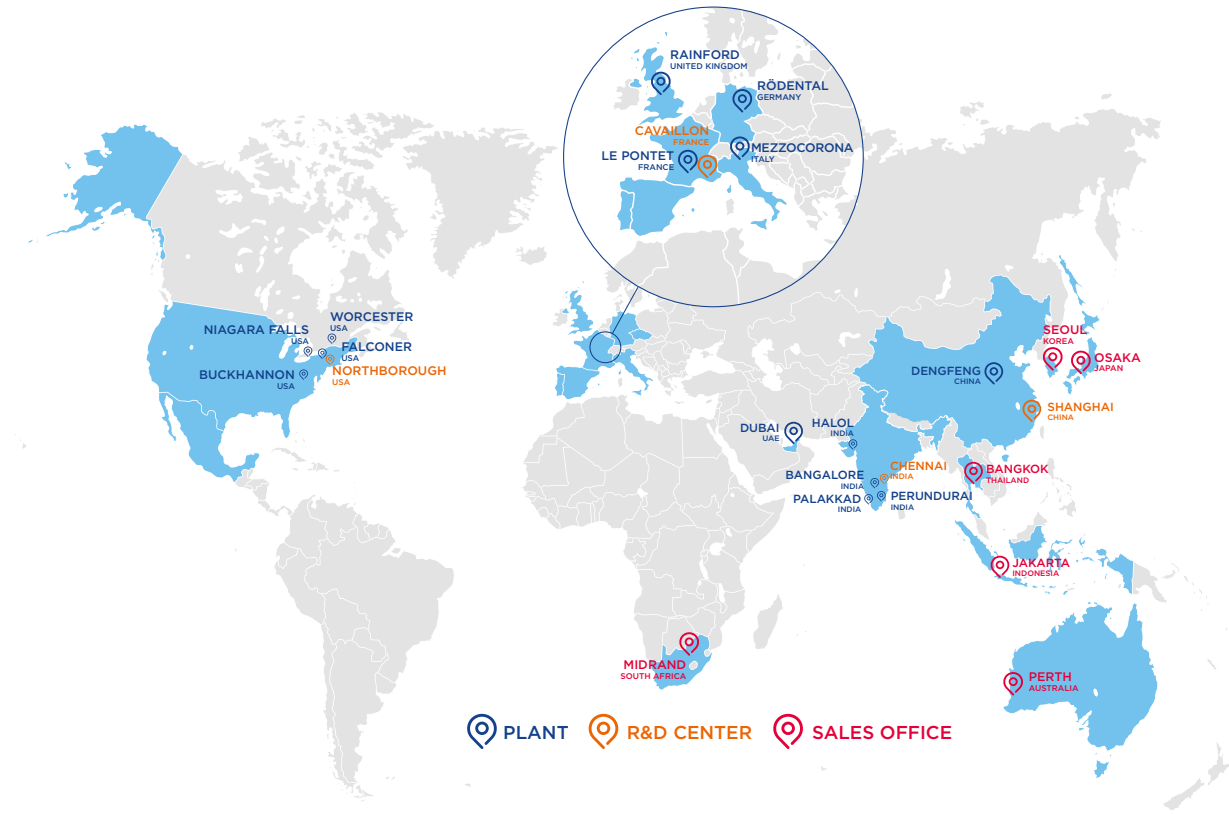


NorFlow® K 1031 after Alcan Immersion test.
Samples are held in 7075 Aluminum for 72 hours at 1700 °F.



NorCast™ K 2000 after Alcan Immersion test.
Samples are held in 7075 Aluminum for 72 hours at 1700 °F.

OUR GLOBAL PRESENCE



CONTACT US

USA

Niagara Falls
+1 716 278 6233
Worcester
+1 508 795 5264
Falconer
+1 716 483 7222

MIDDLE EAST & AFRICA

Dubai (UAE)
+971 4 8011800

EUROPE

Rainford (United Kindom)
+44 1744 882 941
Rödental (Germany)
+49 9563 724 201

INDIA

Bangalore
+ 91 7228 950 887
Halol
+ 91 7228 950 886

PACIFIC

Perth (Australia)
+61 394 745 940

JAPAN

Osaka
+81 6 4707 1700

CHINA

Dengfeng
+86 4008880198
Shanghai
+86 4008880198

ASIA

Seoul (Korea)
+82 2370 693 34
Bangkok (Thailand)
+66 61 415 9204
Jakarta (Indonesia)
+62 81117012480

For more information:
www.ceramicsrefractories.saint-gobain.com
ceramics.refractories@saint-gobain.com

Follow us on 



The information contained in this document is believed to be accurate and reliable but is provided without guarantee or warranty on the part of Saint-Gobain Performance Ceramics & Refractories. Process parameters and requirements can impact typical values and test methods. Further, nothing present herein should be interpreted as an authorization or inducement to practice any patented invention without an appropriate license. Saint-Gobain Performance Ceramics & Refractories Terms and Conditions apply to all purchases.

Copyright © 2024, Saint-Gobain Performance Ceramics & Refractories. All rights reserved.

