



Our most trusted kiln furniture technology delivers increased productivity in manufacturing and processing various automobile components while reducing energy consumption. Our design services are key to optimizing individual requirements.

BENEFITS



Excellent thermal conductivity



Shape stability and strength



Outstanding thermal shock behavior



Defined flatness and surface finish

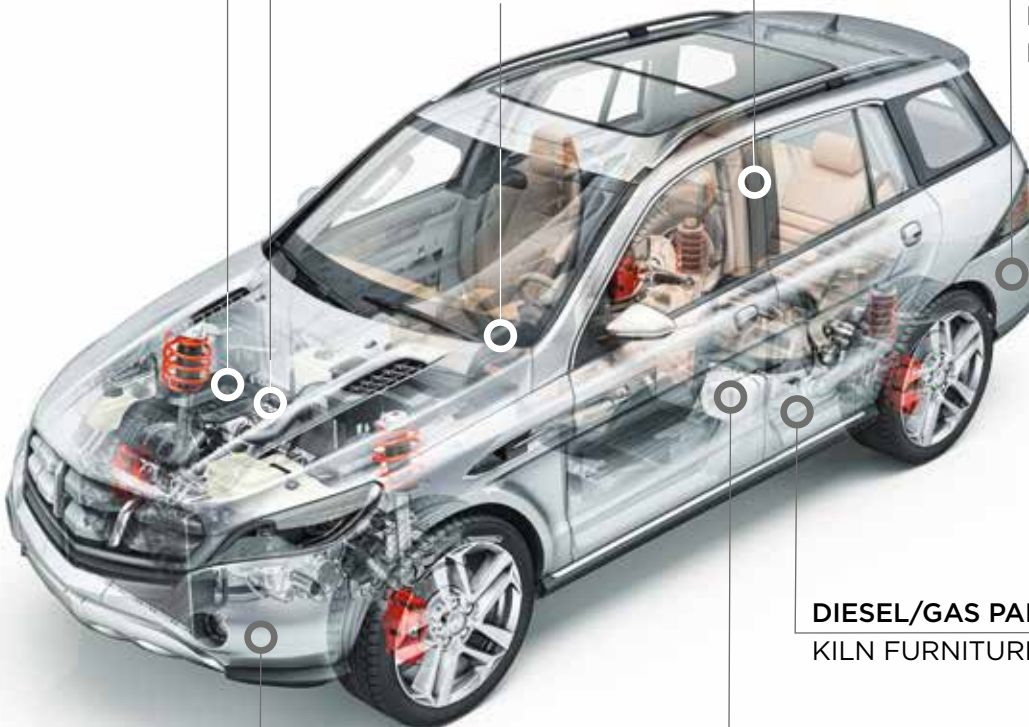
OXYGEN SENSORS
SAGGERS

SPARK PLUGS
SAGGERS

**ANTI-LOCK BRAKING
SYSTEMS**
WAFFLE SLABS
**ELECTRONIC STABILITY
PROGRAMS**
WAFFLE SLABS

CHASSIS COMPONENTS
HOT STAMPING ROLLERS

BUMPERS
HOT STAMPING
ROLLERS



DIESEL/GAS PARTICLE FILTERS
KILN FURNITURE ASSEMBLIES

CATALYTIC CONVERTERS
KILN FURNITURE ASSEMBLIES

BUMPERS
HOT STAMPING ROLLERS



For more
information



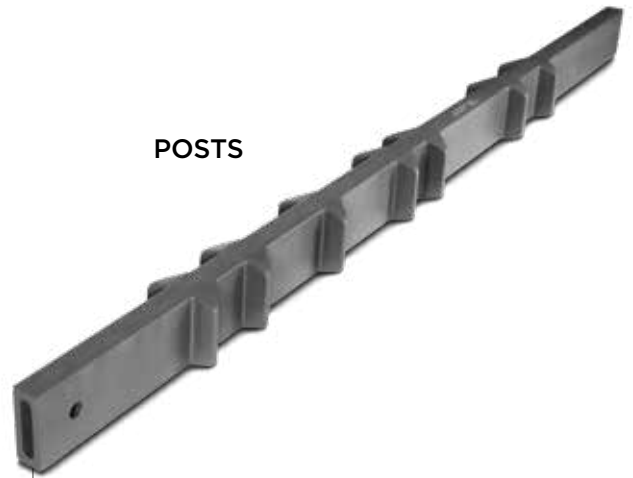
KILN FURNITURE ASSEMBLIES

Our most trusted material technology delivers increased productivity for DPF & GPF, filters and substrate manufacturing while reducing energy consumption.

Customers have always benefited from our design services as it is optimized to individual requirement.



PLATES



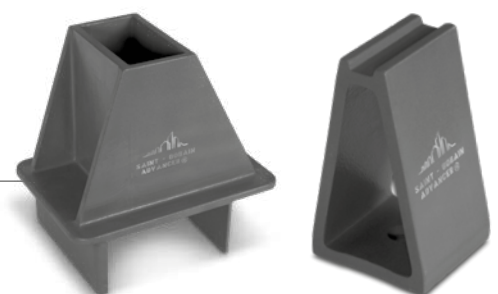
POSTS



ROLLERS



BEAMS & PROFILE BEAMS



SUPPORTS








HOT STAMPING ROLLERS

Our rollers offer distinctive mechanical, thermal & corrosion resistant characteristics, which makes them best in class and delivers unmatched benefits.

For steel hardening and hot forming processes, our hot stamping rollers are the best solution for your roller hearth kiln challenges. They provide longer life and require less maintenance.

BENEFITS

-  Significant longer life time
-  No breakage
-  No diffusion into the roller material
-  Easy removable contaminations
-  Reduced maintenance needs



SiC rollers after 12 months - Superficial contamination with no penetration into the body

For more information: www.ceramicsrefractories.saint-gobain.com, ceramics.refractories@saint-gobain.com

Follow us on: www.linkedin.com/company/saint-gobain-performance-ceramics-refractories twitter.com/SaintGobainPCR



The information contained in this document is believed to be accurate and reliable but is provided without guarantee or warranty on the part of Saint-Gobain Performance Ceramics & Refractories. Process parameters and requirements can impact typical values and test methods. Further, nothing present herein should be interpreted as an authorization or inducement to practice any patented invention without an appropriate license. Saint-Gobain Performance Ceramics & Refractories Terms and Conditions apply to all purchases.