

# Hexoloy® SA Silicon Carbide

## Technical Data

Hexoloy® SA SiC is produced by pressureless sintering submicron silicon carbide powder. The sintering process results in a self-bonded, fine grain (less than 10µm) SiC product which is extremely hard, lightweight and low in porosity. The material can be formed into complex shapes with greater than 98% theoretical density. Hexoloy® SA SiC is highly resistant to corrosion, erosion, sliding wear, high temperature and thermal shock.

### Corrosion Resistance

The corrosion resistance of Hexoloy® SA SiC permits superior performance in environments of hot gasses and liquids including strong acids and bases, even at extremely high temperatures. The results (below) indicate that by comparison Hexoloy® SA SiC outperforms tungsten carbide and aluminum oxide in all chemical categories.

The ability of Hexoloy® SA SiC to resist corrosion along with its excellent surface finish characteristics makes it ideally suited to applications involving heat exchangers, mechanical seal faces, valves, bearings and other mineral and chemical processing equipment components.

### Corrosion Test Results in Liquids

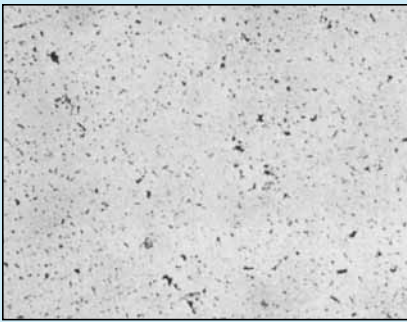
Test Environment*		Corrosive Weight Loss (mg/cm <sup>2</sup> yr)**			
Conc. Reagent (Wt%)	Temp. (°C)	Hexoloy® SA (No Free Si)	Reaction Bonded SiC (12% Si)	Tungsten Carbide (6% Co)	Aluminum Oxide (99%)
98% H <sub>2</sub> SO <sub>4</sub>	100	1.8	55.0	>1000	65.0
50% NaOH	100	2.5	>1000	5.0	75.0
53% HF	25	<0.2	7.9	8.0	20.0
85% H <sub>3</sub> PO <sub>4</sub>	100	<0.2	8.8	55.0	>1000
70% HNO <sub>3</sub>	100	<0.2	0.5	>1000	7.0
45% KOH	100	<0.2	>1000	3.0	60.0
25% HCl	70	<0.2	0.9	85.0	72.0
10% HF plus 57% HNO <sub>3</sub>	25	<0.2	>1000	>1000	16.0



\*Test Time: 125 to 300 hours of submersive testing, continuously stirred.

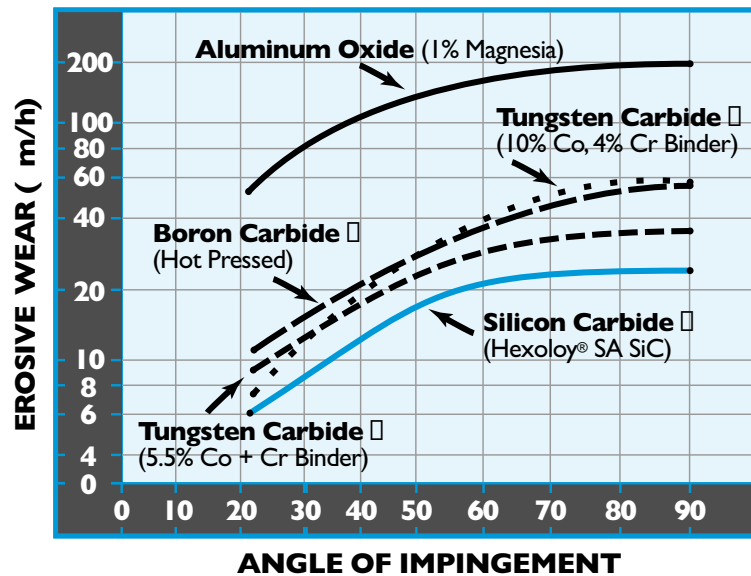
#### \*\*Corrosion Weight Loss Guide:

>1000 mg/cm <sup>2</sup> yr	Completely destroyed within days.
100 to 999 mg/cm <sup>2</sup> yr	Not recommended for service greater than a month
50 to 100 mg/cm <sup>2</sup> yr	Not recommended for service greater than one year
10 to 49 mg/cm <sup>2</sup> yr	Caution recommended, based on the specific application.
0.3 to 9.9 mg/cm <sup>2</sup> yr	Recommended for long term service
<2 mg/cm <sup>2</sup> yr	Recommended for long term service; no corrosion, other than as a result of surface cleaning, was evidenced.



Photomicrograph of Hexoloy® SA Silicon Carbide (200x).

### Erosion Resistance



Erosion resistance is usually associated with high hardness, i.e. high percent theoretical density and reduction of second phase content. Hexoloy® SA SiC is 50% harder than tungsten carbide and ten times harder than conventional stainless steel. This extreme hardness combined with high purity and fine microstructure makes Hexoloy® SA SiC particularly resistant to wear and erosion under mechanically abrasive conditions. The results depicted in the graph are from a test run in accordance with ASTG 76. It clearly demonstrates the superiority of Hexoloy® SA SiC, especially at higher impingement angles.

Hexoloy® SA SiC's excellent erosion and wear resistant properties make it ideally suited for sand blast and spray nozzles, abrasion resistant linings and mechanical seal and bearing surfaces.

### High Temperature Properties

The single phase composition of Hexoloy® SA SiC enables it to reliably perform in air at temperatures in excess of 1900°C (3450°F).

Where dimensional changes at high temperature are a concern, Hexoloy® SA SiC has a consistently low coefficient of thermal expansion. This feature allows design flexibility for shrink fit or leak-tight joint applications.

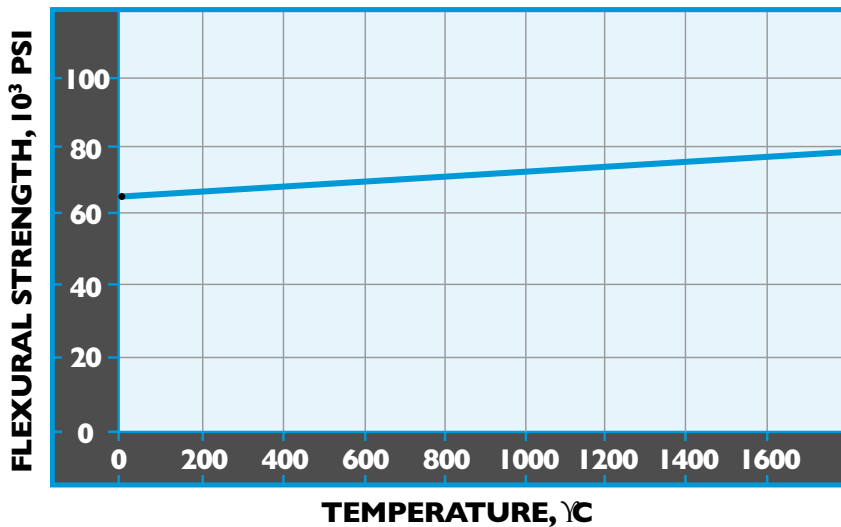
Oxidation resistance is also important for certain high temperature applications. Hexoloy® SA SiC, due to its high purity and high density, is more stable in long-term applications because it is more oxidation resistant. A protective coating of SiO<sub>2</sub> is formed on the surface of SiC which slows the oxidation process.

### Thermal Shock

Because of its high thermal conductivity and low coefficient of thermal expansion, it is very resistant to thermal shock and will survive rapid thermal cycling as compared to other refractory materials.

Typical thermal applications include thermocouple protection tubes, kiln beams, burner components and other furnace and high temperature applications.

### Flexural Strength



Hexoloy® SA SiC exhibits excellent strength at room temperature and maintains that strength even at elevated temperatures as depicted above due to its single phase fine grain structure.

### Designing with Hexoloy® SA SiC

Hexoloy® SA SiC's compressive strength is 10 times greater than its tensile strength. This is an important consideration when designing with ceramics due to an inability to yield and relieve stresses like metals when placed in tension. Care should be taken to chamfer or radius all edges.

### If you'd like to know more...

For more information about Hexoloy® Silicon Carbide products, or to discuss your specific application, contact us. Our engineers will work with you to analyze your particular requirements and determine the most cost effective solution.



Hexoloy® SA SiC wear liners.

## Hexoloy® SA SiC Typical Physical Properties

Property	Units	Typical Value
Composition*	–	SiC
Grain Size	µm	4-10
Density	g/cm <sup>3</sup>	3.10
Hardness (Knoop)**	kg/mm <sup>2</sup>	2800
Flexural Strength 4 pt @ RT***	MPa x10 <sup>3</sup> lb/in <sup>2</sup>	380 55
Flexural Strength 3 pt @ RT***	MPa x10 <sup>3</sup> lb/in <sup>2</sup>	550 80
Compressive Strength @ RT	MPa x10 <sup>3</sup> lb/in <sup>2</sup>	3900 560
Modulus of Elasticity @ RT	GPa x10 <sup>6</sup> lb/in <sup>2</sup>	430 62
Weibull Modulus (2 parameter)		10
Poisson Ratio		0.14
Fracture Toughness @ RT Double Torsion & SENB	MPa x m <sup>1/2</sup> x10 <sup>3</sup> lb/in <sup>2</sup> x in <sup>1/2</sup>	4.60 4.20
Coefficient of Thermal Expansion RT to 700°C	x10 <sup>-6</sup> mm/mmK x10 <sup>-6</sup> in/in °F	4.02 2.20
Maximum Service Temp. Air	°C °F	1900 3450
Mean Specific Heat @ RT	J/gmK	0.67
Thermal Conductivity @ RT	W/mK Btu/ft h °F	125.6 72.6
@ 200°C	W/mK Btu/ft h °F	102.6 59.3
@ 400°C	W/m <sup>2</sup> K Btu/ft h °F	77.5 44.8
Permeability @ RT to 1000°C	Impervious to gases over 31 MPa	
Electrical Resistivity @ RT**** @ 1000°C	ohm-cm ohm-cm	10 <sup>2</sup> -10 <sup>8</sup> 0.01-0.2
Emissivity		0.9

\*Composition code: Si = free silicon metal;  
C = free graphite; SiC = silicon carbide

\*\*Knoop 0.1 kg load

\*\*\*Test Bar Size: 3 x 4 x 45 mm  
(0.118" x 0.157" x 1.772")

\*\*\*\*Dependent upon dopants in Hexoloy® SA  
SiC which will decrease electrical resistivity

Saint-Gobain Ceramics  
Structural Ceramics  
Hexoloy® Products  
23 Acheson Drive  
Niagara Falls, New York 14303  
Telephone: 716-278-6233  
Fax: 716-278-2373  
E-mail: [scd.sales@saint-gobain.com](mailto:scd.sales@saint-gobain.com)  
[www.hexoloy.com](http://www.hexoloy.com)

©2012 Saint-Gobain Ceramics  
All Rights Reserved  
Form No. B-1045  
5/12 QTY. 1,000

The information, recommendations and opinions set forth herein are offered solely for your consideration, inquiry, and verification and are not, in part or total, to be construed as constituting a warranty or representation for which we assume legal responsibility. Nothing contained herein is to be interpreted as authorization to practice a patented invention without a license.  
Hexoloy® is a registered trademark of Saint-Gobain Ceramics.